

 **NAVIKON**

# NAVIKON in a nutshell



over 30 years  
of experience



Privately  
owned



Location next to deep water port  
and installation port for offshore wind



100  
professionals



Compliance with offshore  
industry HQSE standards

# NAVIKON'S VAST EXPERTISE



## Oil & gas

subsea structures

offshore modules

offshore vessels services  
& repairs



## Wind energy

secondary  
steel

seafastenings and grillages

mobilisation of wind turbines  
installation vessels



## Maritime

floating dock production

ship repairs & conversions

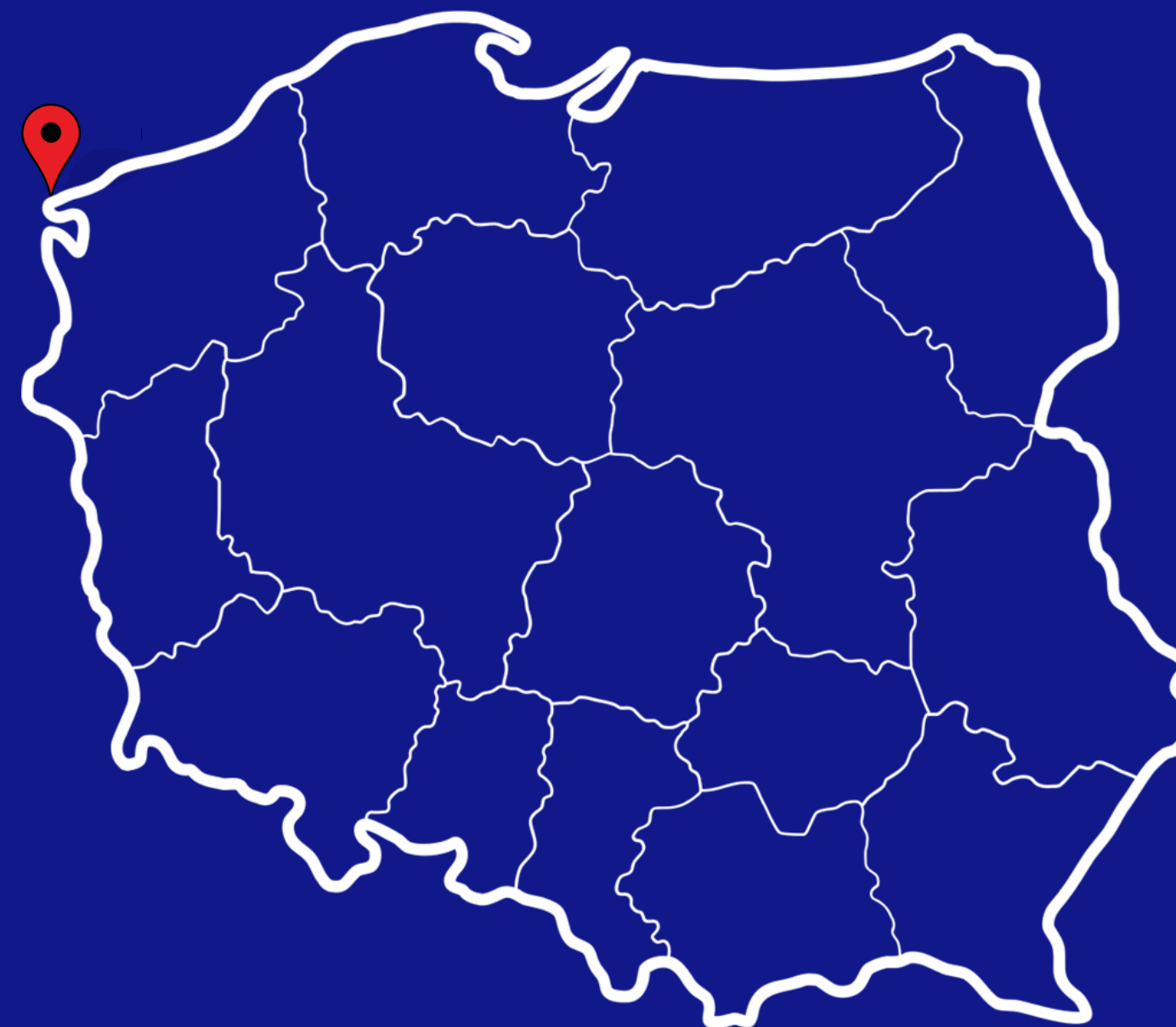
BWTS installations

Scrubber installations

**NAVIBON** is located in north of Poland, in Świnoujście, West Pomeranian region, in direct proximity to the German border.

Core terminal for handling windmill parts (Euro Terminal) is at 800m distance from **NAVIBON**.

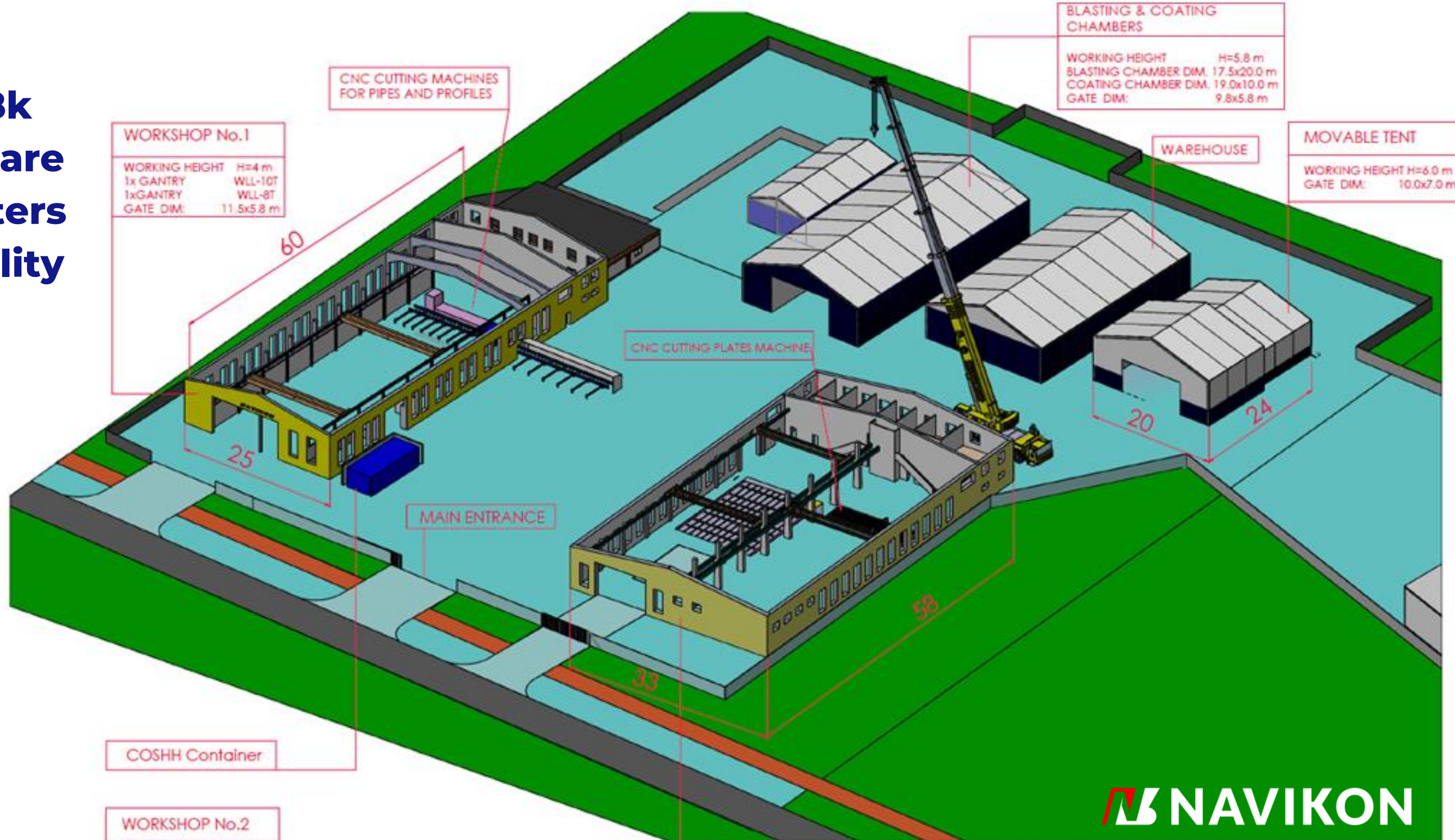
ORLEN Neptun installation port for offshore wind is at 600m distance from **NAVIBON**.



**NAVIKON is located close to ORLEN's installation port in Świnoujście**



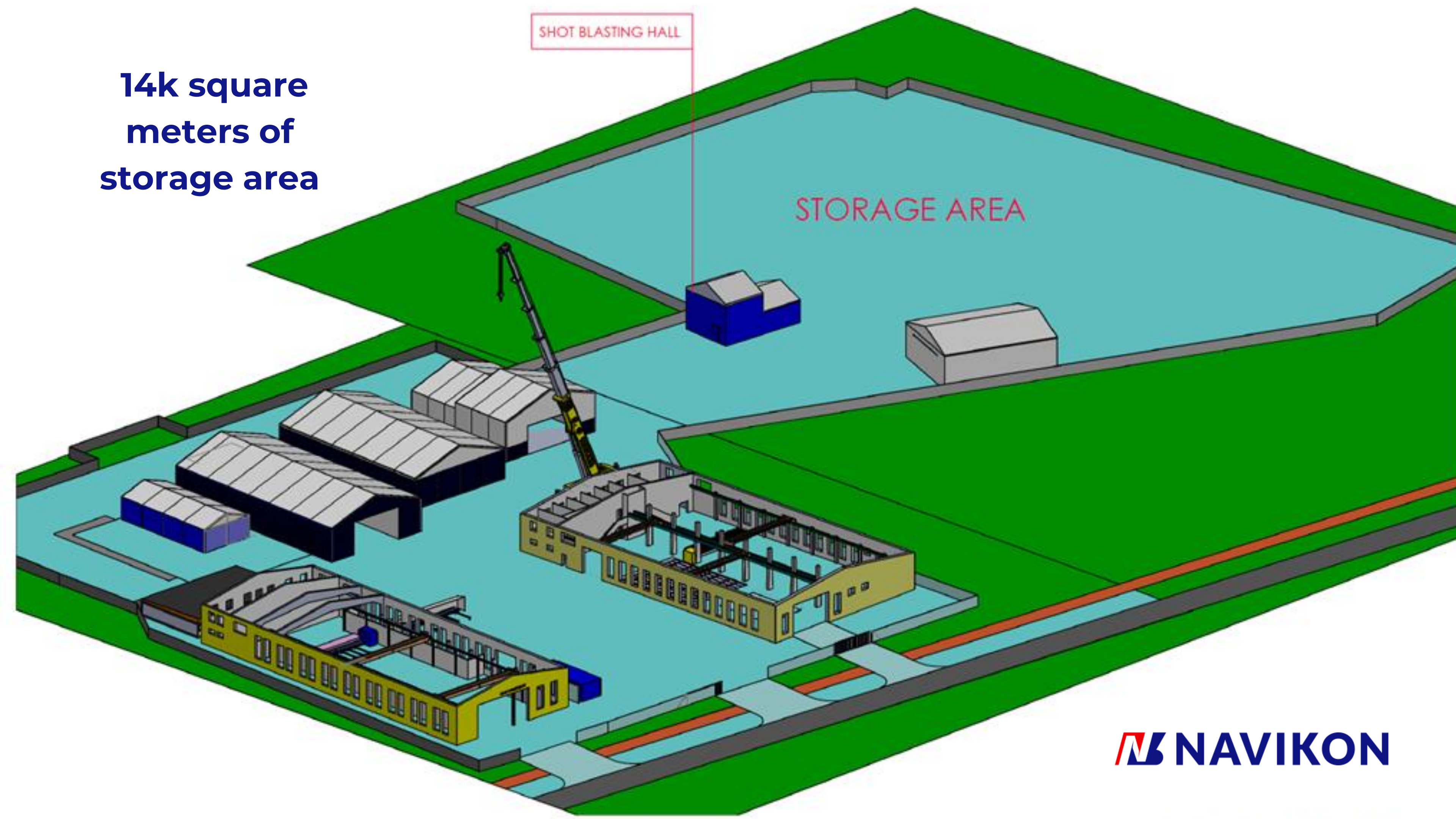
# 28k square meters facility



14k square  
meters of  
storage area

SHOT BLASTING HALL

STORAGE AREA







# NAVIKON'S INFRASTRUCTURE PRODUCTION HALLS



## Hall No.1

gate 11.5m x 5.8m;  
working height: 4.3m

## Gantry Cranes

10 tons load capacity – 1 pc  
8 tons load capacity – 1 pc

## Hall No.2

gate 8.0m x 5.4m;  
working height: 4.3m

## Gantry Cranes

8 tons load capacity – 1 pc  
5 tons load capacity – 1 pc  
5 tons load capacity – 1 pc

## Hall No.3

gate 10.0m x 7.0m;  
working height: 6.0m  
rails movable - 16 x 20 x 6 meters

## Painting chamber

working height: 5.8m  
19.0m x 10.0m

## Steel grit blasting chamber

working height: 5.8m  
17.5m x 20.0m



# NAVIKON'S EQUIPMENT



**HD CNC plasma cutting machine 250A**  
3 x 12 meter plates (up to 120 mm thickness)

**CNC press brake**  
with 210 ton pressure saws

**3D pipe cutting machine**  
in range of 48 - 1200 mm  
HGG SPC 1200

**3D beam cutting machine**  
HGG RPC 1200 max profile size: HEB1000

**Passthrough shot blasting machine**  
up to 1000 x 1000

# NAVIKON'S ASSETS PRODUCTION CAPACITY



Steel work efficiency: **200 ton/month (2400 tons per year)**

Coating chamber efficiency: **5000 m<sup>2</sup>/month**

**WPQRs:** allowing welding of steel components up to 200 mm thick, including high yield strength structural steels such as S690.

# NAVIKON'S ASSETS

## TRANSPORT EQUIPMENT



### CRANES

160 tons load capacity – 1 pc  
40 tons load capacity – 1 pc

### FORKLIFTS

16 tons load capacity – 2 pcs  
7 tons load capacity – 1 pc  
3,2 tons load capacity – 1 pc

### SPMT

30 tons load capacity – 1 pc

### TRAILERS

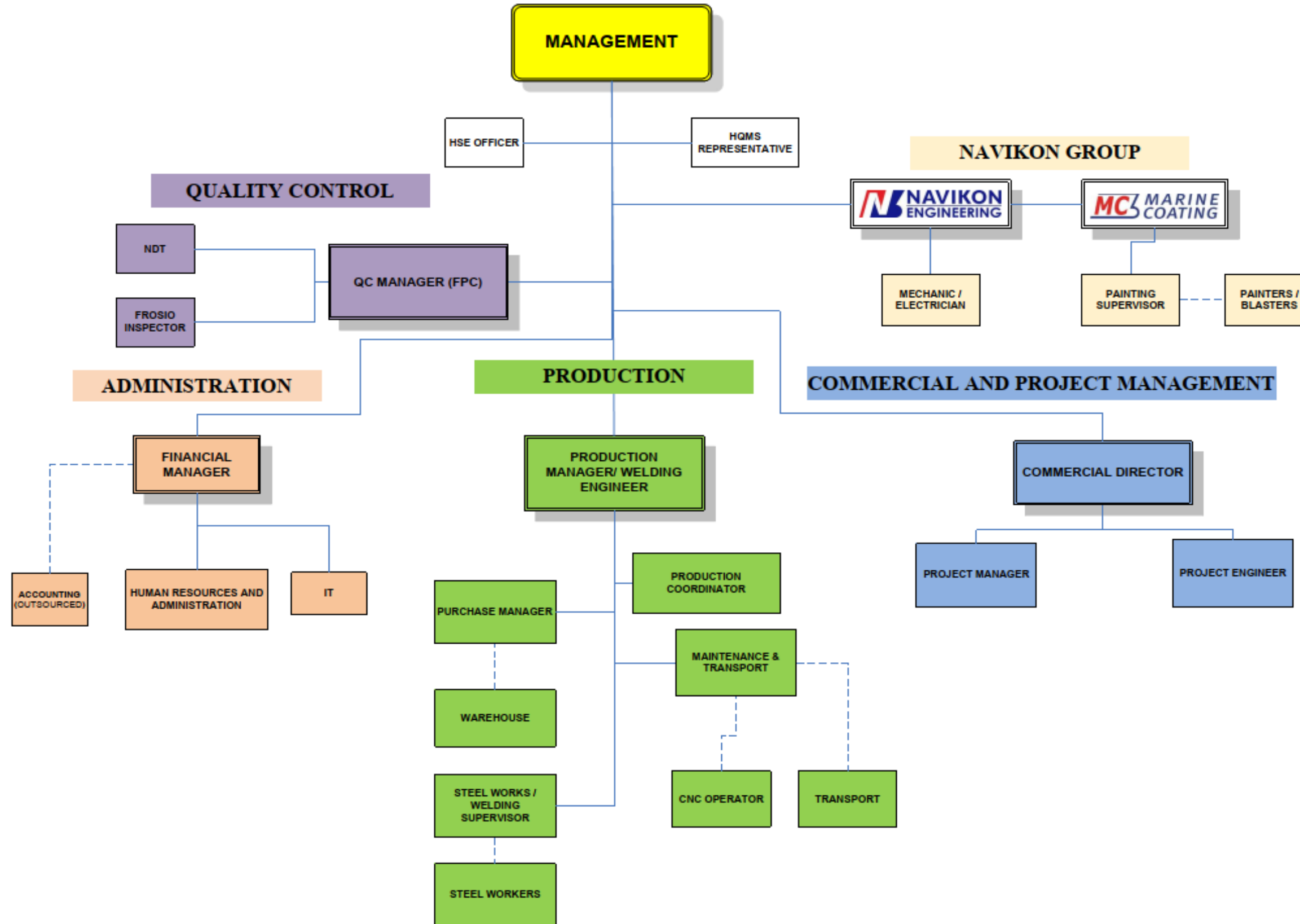
120 tons load capacity – 1 pc  
70 tons load capacity – 1 pc  
24 tons load capacity – 1 pc  
8 tons load capacity – 1 pc

### TELEHANDLERS

3,5 tons load capacity with 17 m  
reach capacity – 1 pc  
3,5 tons load capacity with 14 m  
reach capacity – 1 pc



# Organizational structure ensures providing high quality services



# NAVIKON'S EMPLOYEES



## **WELDERS**

Welder's certificates issued by PRS, TÜV, DNVGL  
in accordance with norm PN-EN 287-1 or  
EN ISO 9606-1 and EN ISO 9606-2

## **WELDING SUPERVISOR**

Certificate of International Welding Engineer  
in accordance with norm PN-EN 14731 or IWI-C

## **QUALITY CONTROL INSPECTORS**

Certificates for non destructive testing of welding  
seams in accordance with norm EN 9712  
in the following range of application:

- VT2 - issued by TÜV
- MT2, MT3 - issued by Welding Institute
- UT2- issued by Welding Institute
- PT2 - issued by Welding Institute

## **PAINTING**

Inspector with competence equivalent to NACE-Coating Inspector Level 2 and Certified FROSIO  
Level III Inspector



# NAVIKON CARES ABOUT QUALITY



## QUALITY MANAGEMENT

Quality Management System in accordance with **ISO 9001:2015** by PRS and Quality Management System of Welding **ISO 3834-2** by TUV; **EN 1090-2; EXC4** by TUV.

## OH&S MANAGEMENT SYSTEM

Occupational health and safety management system certified in accordance with **ISO 45001** standard by PRS.

## EMS

Environmental Management System certified in accordance with **ISO 14001** standard by PRS.

## WPS

Certificate for welding of hull structure and steam boilers issued by DNV, Welding Procedure Qualification Record (WPQR) approved by DNV, LRS, GL, UDT, TUV, PRS, in accordance with PN-EN ISO 15614-1, ISO 15614-2, ISO 15613 and offshore standard DNV-OS-C401, Norsok M-101, Norsok M-601.

## INSURANCE

Liability Insurance Certificate. Sum insured: EUR 2.500.000.

 **NAVIKON**

**MAIN**

**PROJECTS**

SOFIA OWF  
Boatlandings, Upper ladders,  
Main Access Platform -  
Access ladders

Fabrication of 100 sets of permanent  
structures, in total 2 300 tonnes.

Fabrication Standard EN 1090-2  
(EXC3)



 MNAVIKON

## GALLOPER OWF

Fabrication of various seafastening structures, in total 600 tonnes.

Fabrication Standard DNV-OS-C401



 MAVIRIKON

# HINKLEY POINT C

Fabrication of various seafastening structures for Energy Plant, total weight: 400 tonnes.

Fabrication Standard DNV-OS-C401



**MAV**  
NAV  
IKON

# HOHE SEE OWF

Fabrication and installation of 335 tonnes of seafastening structures, including S690 steel structures.

Fabrication Standard EN 1090-2 (EXC2)



**NAVIKON**

## ROV HANGAR

Fabrication and outfitting of two modules for Oil&Gas industry.  
Weight of each module: 135 tonnes.

Fabrication Standard DNV-OS-C401



**BRNAVVIKON**

## WRL ANCHORS

Fabrication of 8 pcs of Suction Anchors, in total 144 tonnes.

Execution according to Norsok M-101  
na Norsok M-501 System 7



**MAVVIKON**



# IN CASE OF ANY FURTHER INQUIRIES



**Michał Kowalski – General Manager**

Mob. +48 693 373 247

[michal.kowalski@navikon.pl](mailto:michal.kowalski@navikon.pl)

Navikon SRY Ltd  
13 Ludzi Morza Str.  
72-602  
Świnoujście

 **NAVIKON**