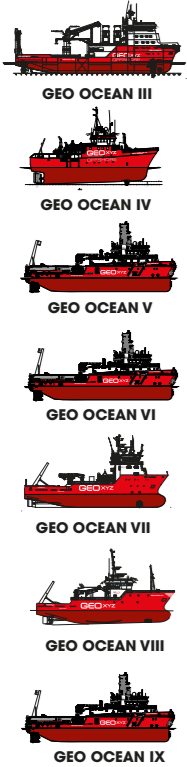


OFFSHORE SURVEY VESSELS



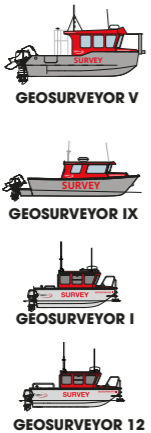
NEARSHORE SURVEY VESSELS



CREW TRANSFER VESSELS



INLAND SURVEY VESSELS



THESE DRAWINGS ARE NOT TO SCALE

At GEOxyz, our commitment to excellence extends across every facet of our operations. We're more than just a contractor; we're your trusted survey partner. Together, we collaborate to envision the best possible outcomes for your projects.

**EXPERTISE**

Working with highly experienced staff, who are also very passionate about their job, is what sets GEOxyz apart in our approach, making sure that each project is delivered on time and within budget.



**EQUIPMENT**

GEOxyz is constantly investing in the newest equipment. For extra efficient data collection.



**QHSE Standards:**

With a dedicated QHSE team, we rigorously oversee the quality and safety of all our operations, ensuring the highest standards of compliance & protocols.



**Focus on Sustainability:**

As a leading international survey company, we recognize our responsibility to minimize our environmental footprint and promote sustainable practices. From eco-friendly technologies to supporting renewable energy initiatives.



**Commitment to Client Success:**

Our ultimate goal is to empower our clients to succeed. We achieve this by delivering accurate, reliable, and actionable data through comprehensive reporting, enabling our clients to make informed decisions and execute projects with confidence.

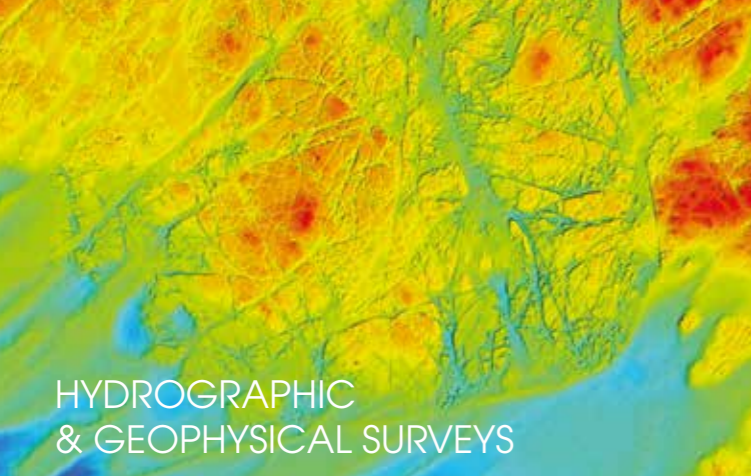
- HYDROGRAPHIC, GEOPHYSICAL & GEOTECHNICAL SURVEYS
- OFFSHORE SUPPORT • DIMENSIONAL CONTROL



**GEOxyz**

HEAD OFFICE  
www.geoxyz.eu

LOCAL OFFICES  
www.geoxyz.be  
www.geoxyz.lu  
www.geoxyz.co.uk  
www.geoxyz.fr  
www.geoxyz.nl  
www.geoxyz.es  
www.geoxyz.us  
www.geoxyz.pt



## HYDROGRAPHIC & GEOPHYSICAL SURVEYS

- Bathymetric surveys
- Side scan sonar surveys
- Magnetometry surveys
- High resolution seismic / Geohazards
- Cable tracking and DOB
- Cable and pipe touchdown monitoring
- UXO services
- UAV • ASV • AUV • ROV



## GEOTECHNICAL SURVEYS

- Nautical bottom surveys
- CPT
- Sampling: Vibrocore / Piston Corer / Mud sampling / Van veen Grab
- Laboratory Analysis
- Current and wave measurements
- Environmental & Metocean monitoring

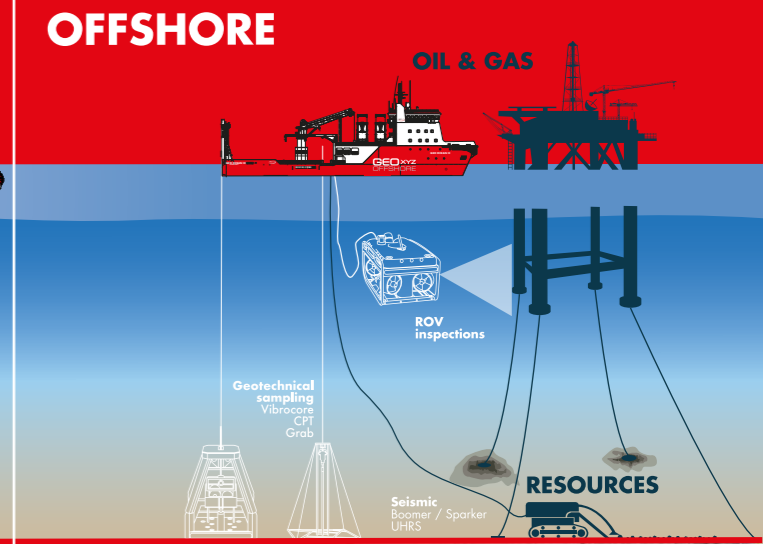
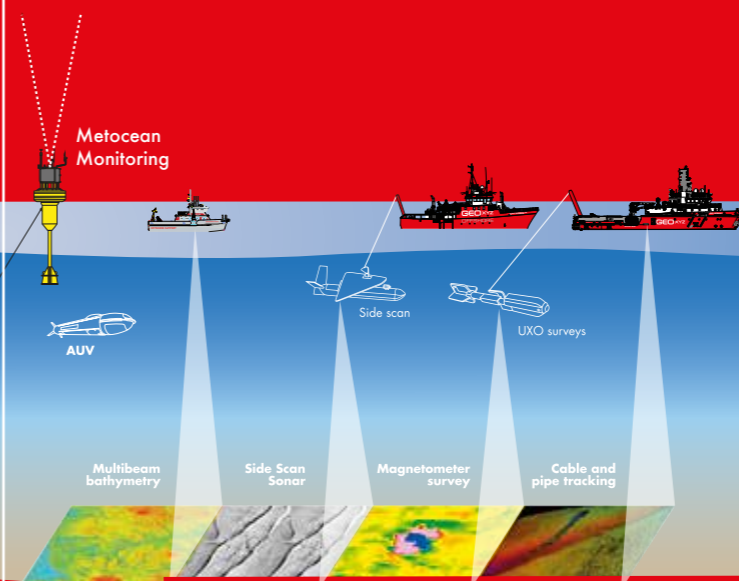


- Offshore & Onshore Positioning services
- Dredge registration systems
- Rigmoves
- Topography: Total station / GPS / Monitoring / Laserscanning
- Under water Positioning
- Salvage



## OFFSHORE SUPPORT

- Crew Transfers
- O&M Services
- Oil spill Cleanup
- Offshore construction services
- Dive support



## our **survey** services.

- Site investigation
- Construction support
- Operation & maintenance services
- Decommissioning